

Jet Propulsion Laboratory
California Institute of Technology

DisALEXI: Evapotranspiration disaggregation to field scales

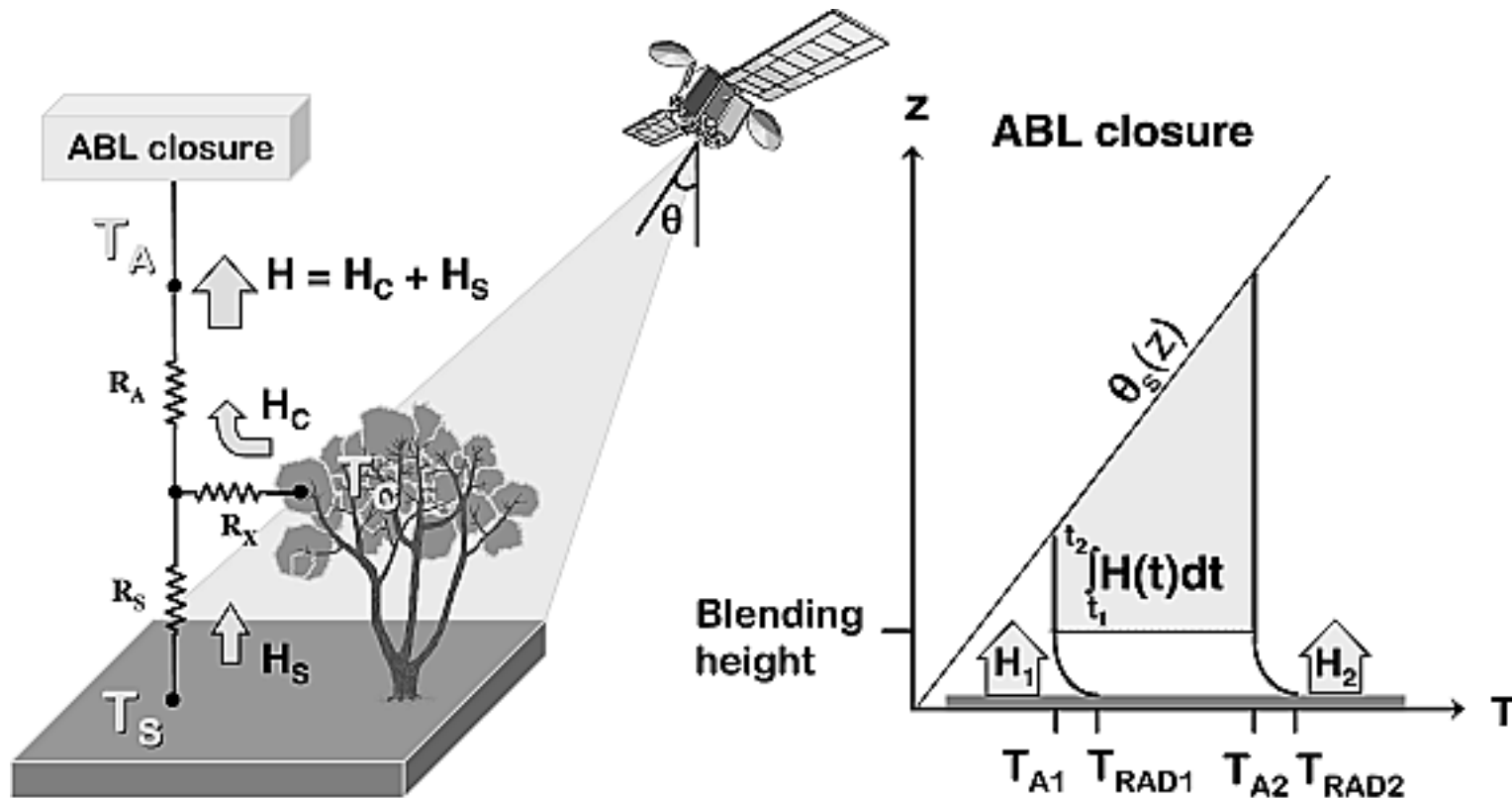
Kerry Cawse-Nicholson¹, Simon Hook¹, Martha Anderson², Chris Hain³

¹*Jet Propulsion Laboratory, California Institute of Technology*

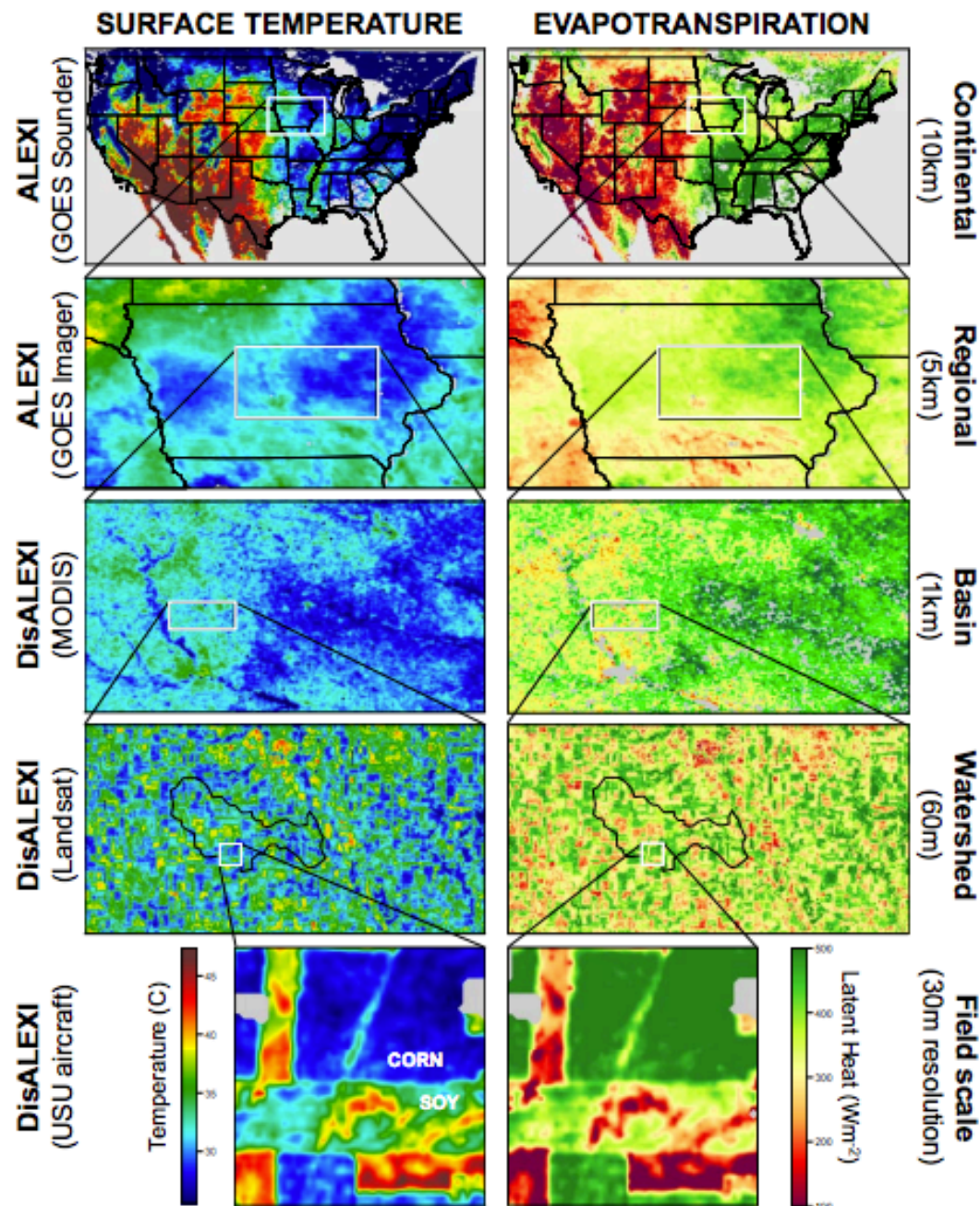
²*USDA-Agricultural Research Service Hydrology and Remote Sensing Laboratory Beltsville, MD*

³*NASA-Marshall Space Flight Center Huntsville, AL*

ALEXI – The Atmosphere-Land Exchange Inverse



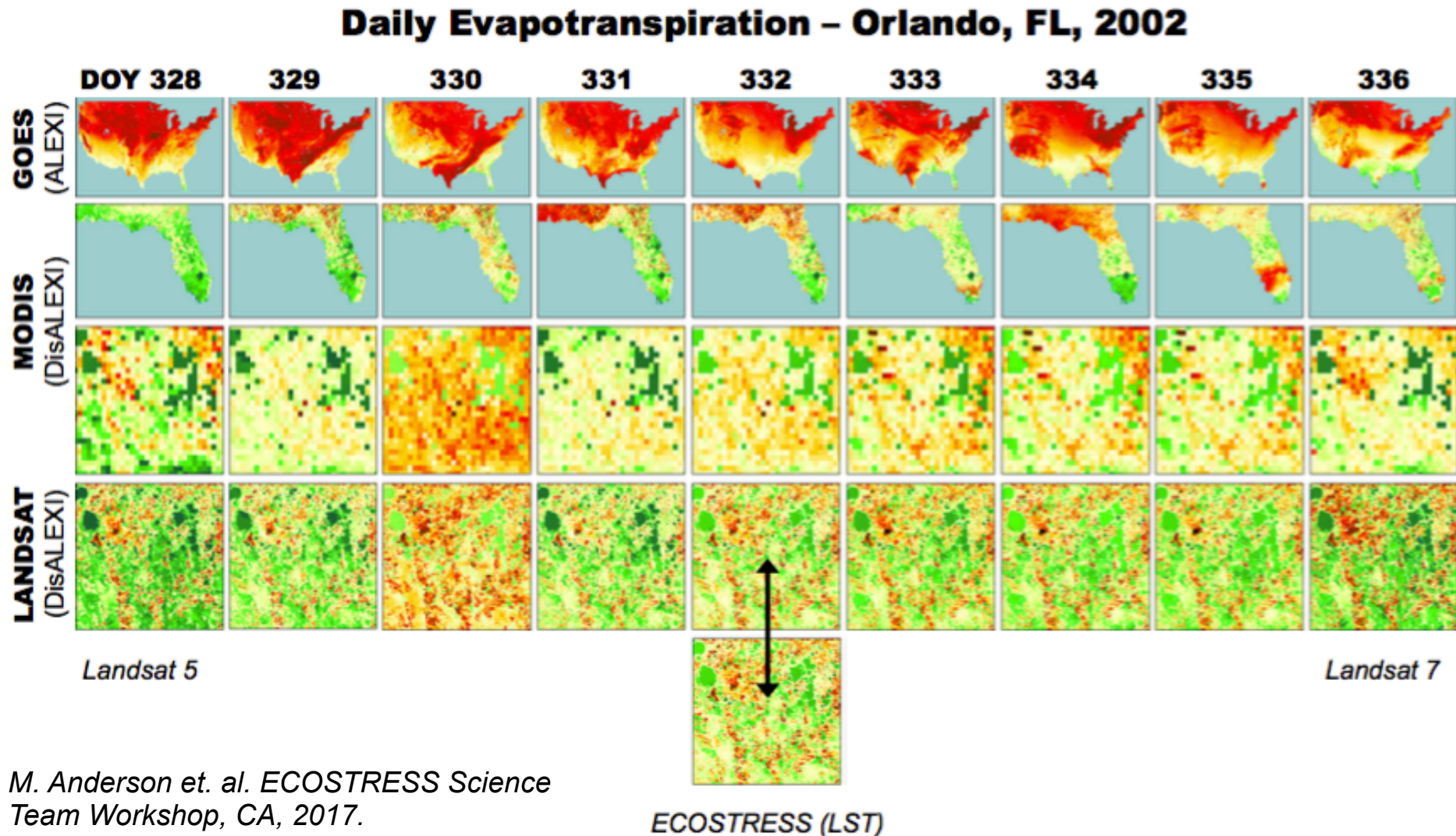
Anderson, M. C., J. M. Norman, J. R. Mecikalski, J. A. Otkin, and W. P. Kustas (2007), A climatological study of evapotranspiration and moisture stress across the continental United States based on thermal remote sensing: 1. Model formulation, J. Geophys. Res., 112, D10117.

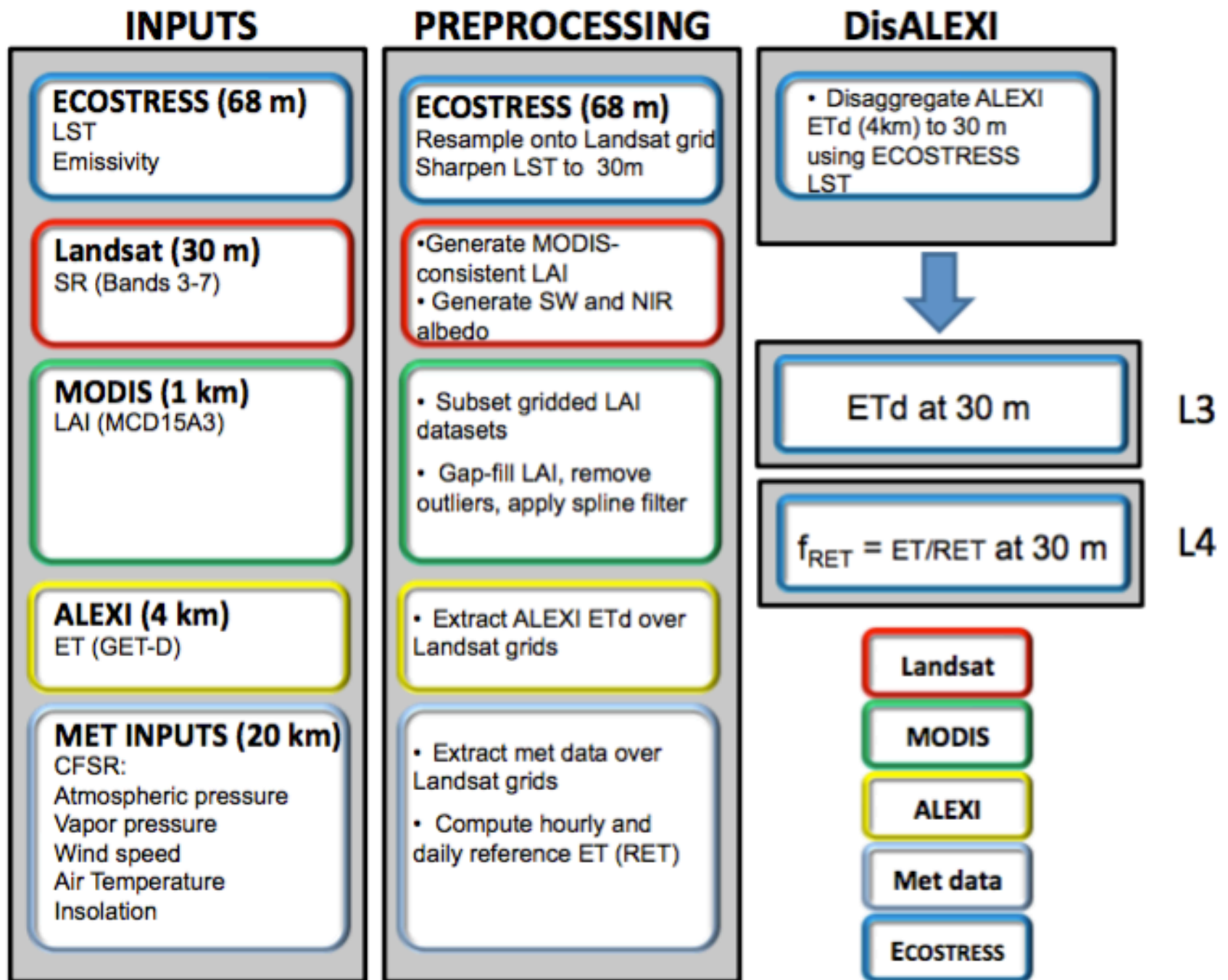


ALEXI

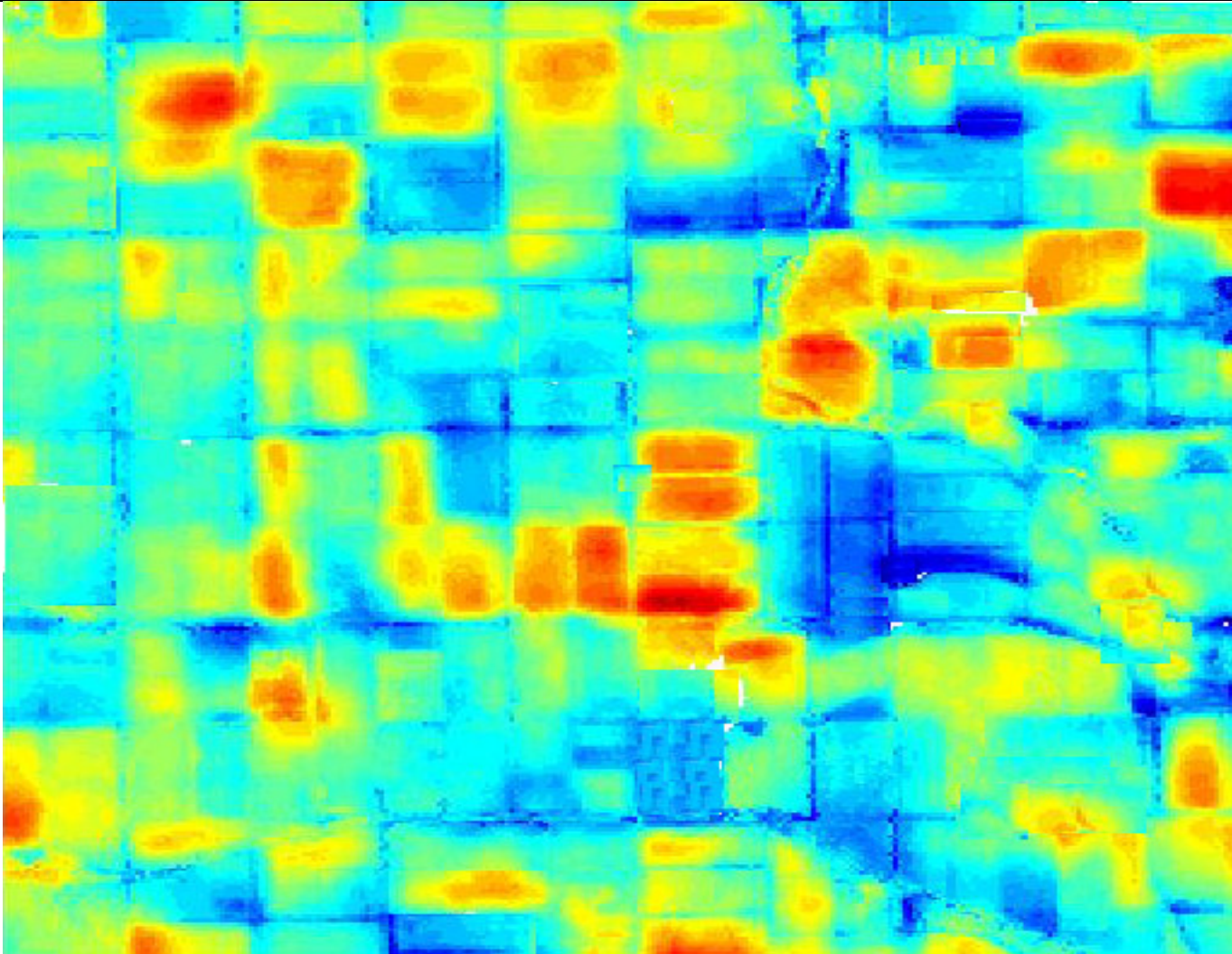
- The Atmosphere-Land Exchange Inverse is produced at different scales, using geostationary and polar orbiting satellites.
- We use the GOES-derived ALEXI produced daily over CONUS at 4km resolution.
- Using the time difference, small artefacts introduced during atmospheric correction are mitigated.
- However, these coarse resolution ET estimates can be up-sampled using higher resolution thermal measurements.

Disaggregation using ECOSTRESS

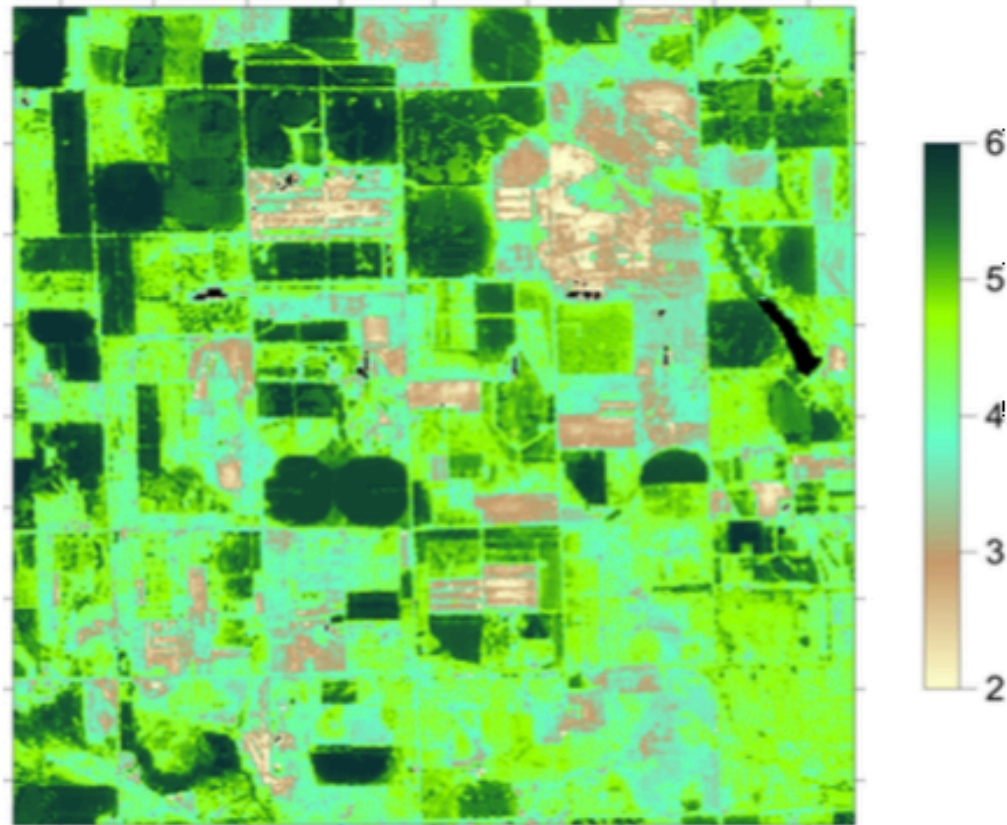
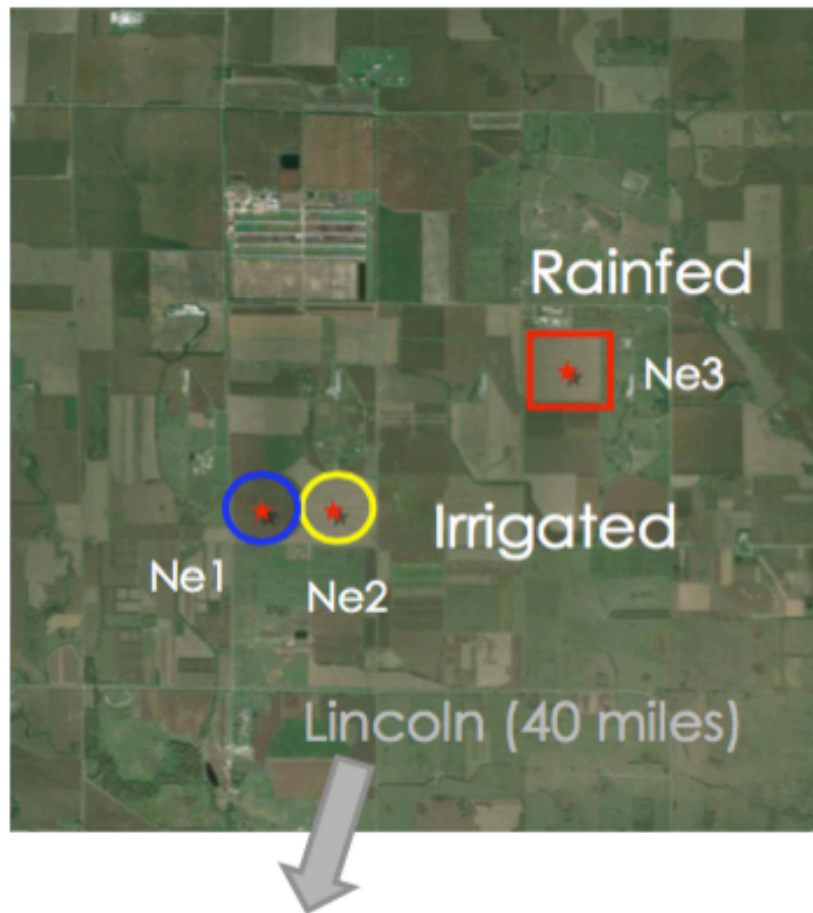




ET at field-scale



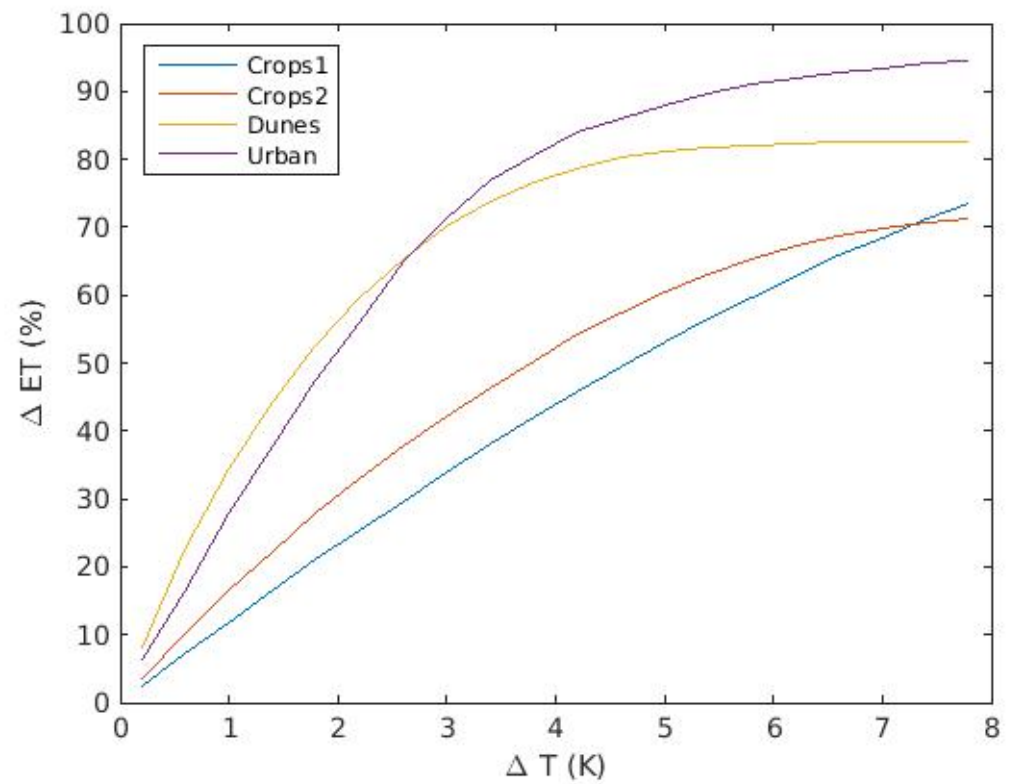
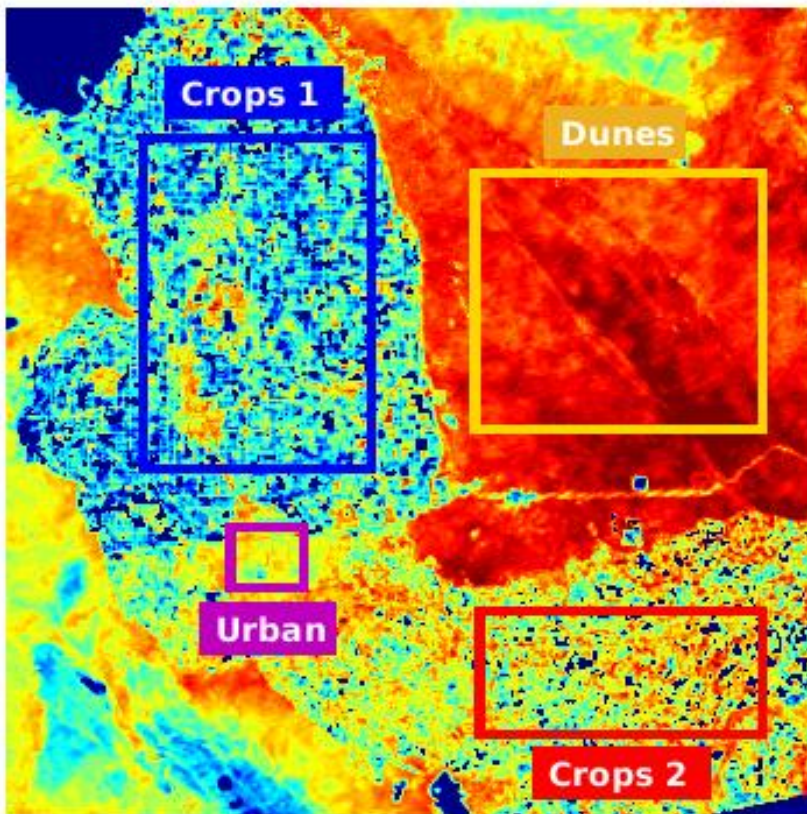
Mead, NE



Yang, Y, et al. (2017) "Field-scale mapping of evaporative stress indicators of crop yield: an application over Mead, NE, *Remote Sensing Environ*, in preparation.

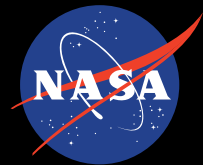
Landsat 8 - 2013

disALEXI sensitivity



Final remarks

- ALEXI is a coarse-resolution evapotranspiration model, that separates the contribution from canopy and soil, and takes advantage of the change in temperature as an input, in order to reduce errors.
- disALEXI is a disaggregation tool that up-samples ALEXI to the field-scale.
- disALEXI has been incorporated into the ECOSTRESS processing chain, in order to provide field-level evapotranspiration for precision agriculture and drought monitoring.



Jet Propulsion Laboratory
California Institute of Technology

jpl.nasa.gov