

The Rim fire in Yosemite, CA: Opportunities for the HysplRI Preparatory Airborne Campaign

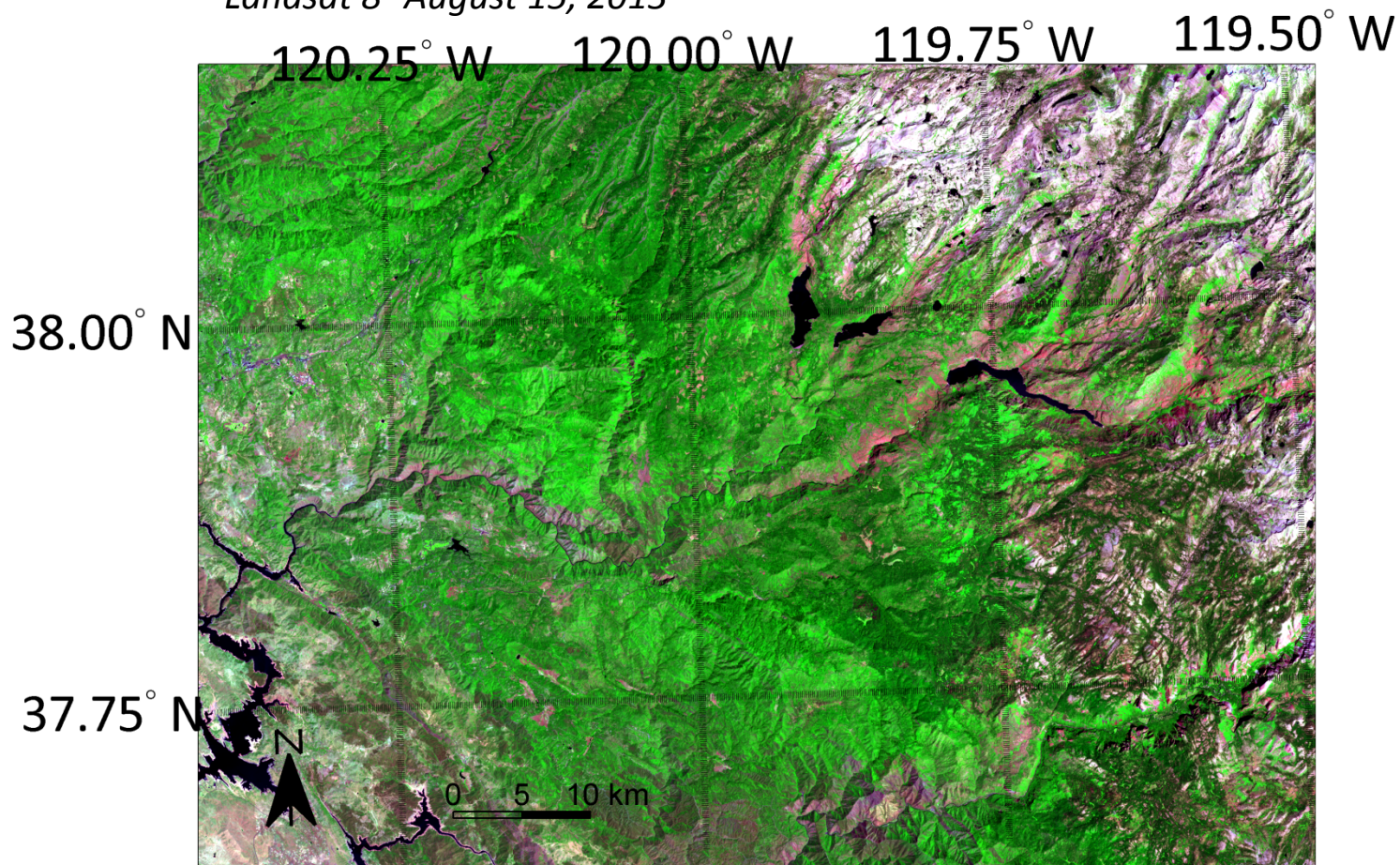
Sander Veraverbeke, Simon Hook and Rob Green
Jet Propulsion Laboratory (NASA), California Institute of Technology

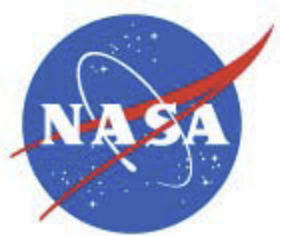


Overview



Landsat 8 August 15, 2013

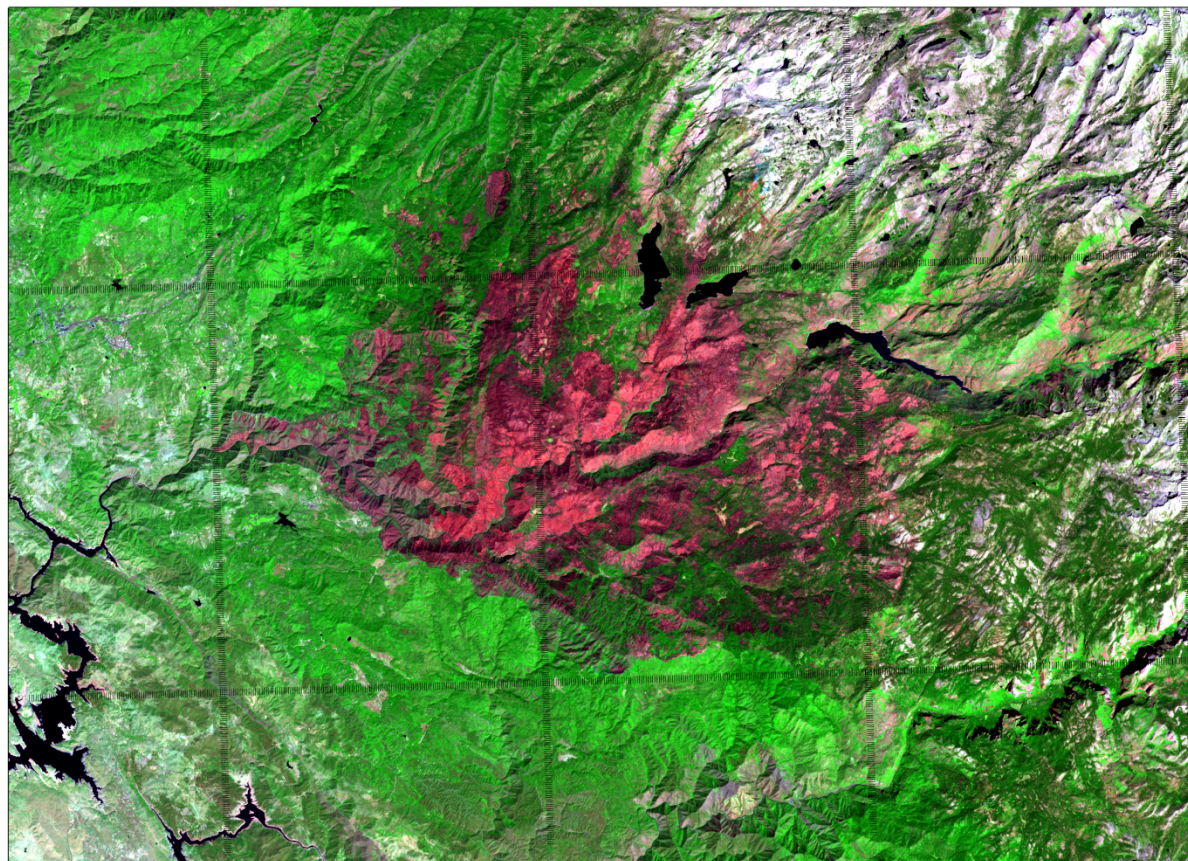


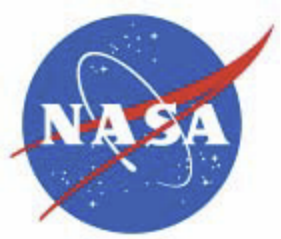


Overview



Landsat 8 September 16, 2013





Overview

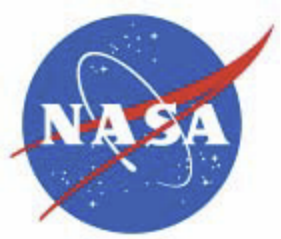


One of the largest fires in the recorded CA fire history (104 000 ha)

Burned in a *heterogeneous landscape* of mixed conifer forest, chaparral, meadows

Main tree species: sugar, Jeffrey and Ponderosa pine, red and white fir





Data coverage



Pre-fire

MASTER covers 95%

AVIRIS more than 50%

LIDAR less than 5%

Active fire

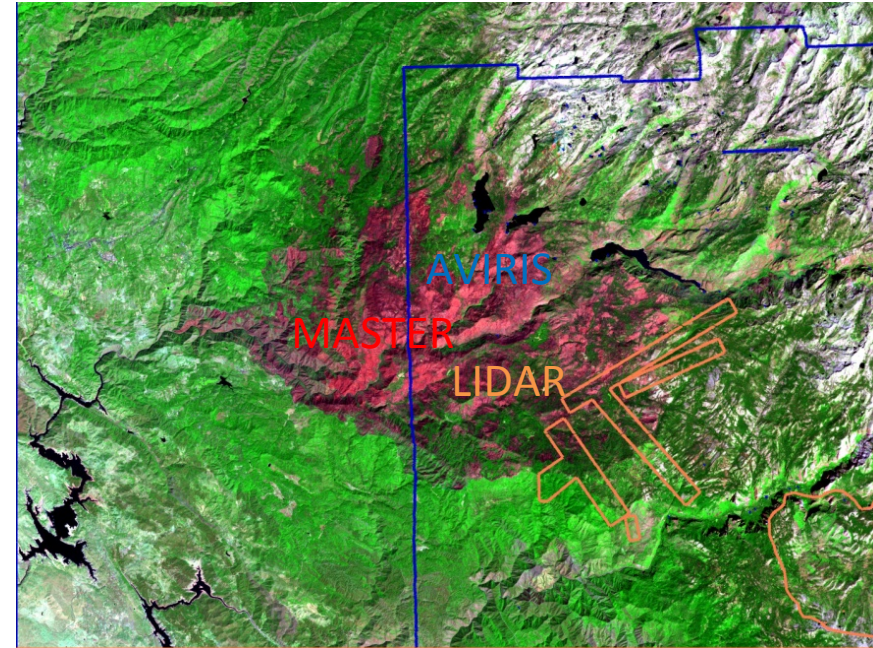
MASTER and AVIRIS collected data on September 13

Post-fire

All sensors will cover entire fire perimeter

MASTER and AVIRIS → JPL

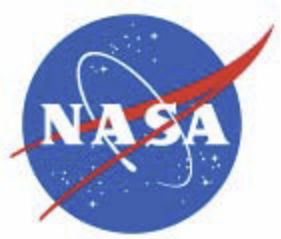
LIDAR → NCALM and UC Davis



Fire is a key science and application area for HypsIRI (pre-fire, active fire and post-fire)

➡ The availability of **pre- and post-fire MASTER, AVIRIS and LIDAR** presents an unprecedented opportunity

Highlights the need for HypsIRI-like routine global coverage



Planned field work



Composite Burn Index

A. GeoCBI = 3



B. GeoCBI = 1.95



C. GeoCBI = 0.85



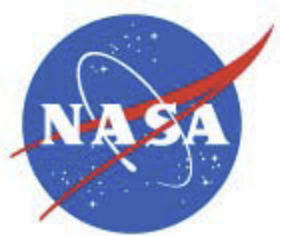
Tree mortality, % 'black-brown-green'

Tree species

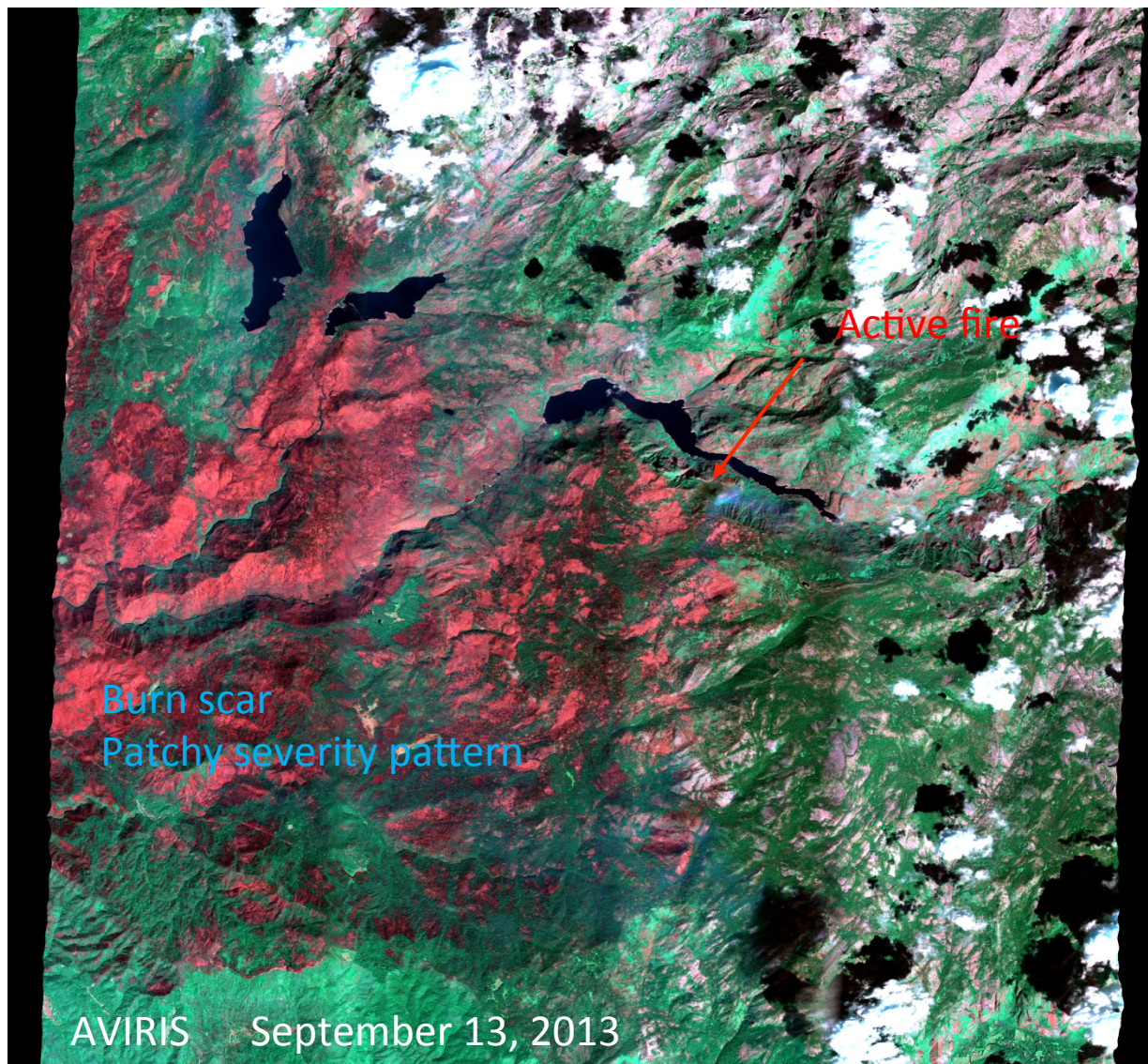
Bark, branch and canopy combustion completeness

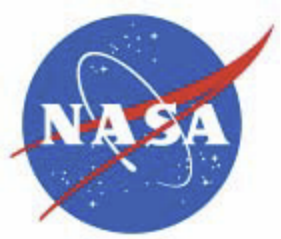
Tree DBH

Biomass and carbon loss
(through allometry)



Opportunities for active fire and post-fire research



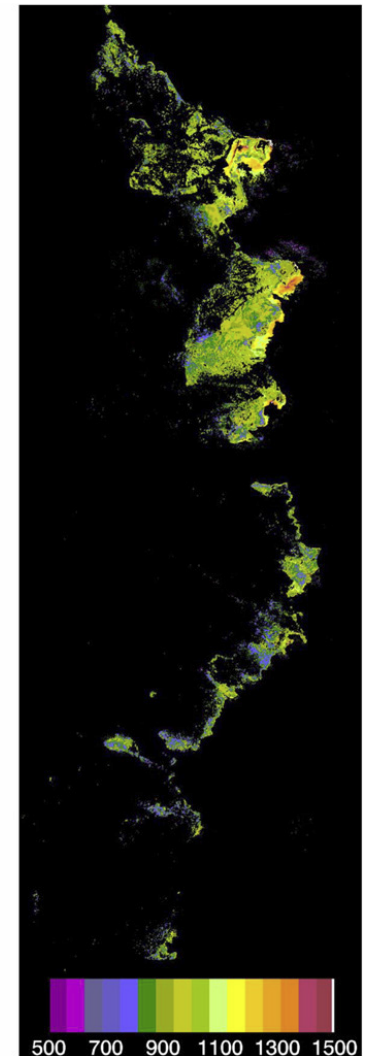
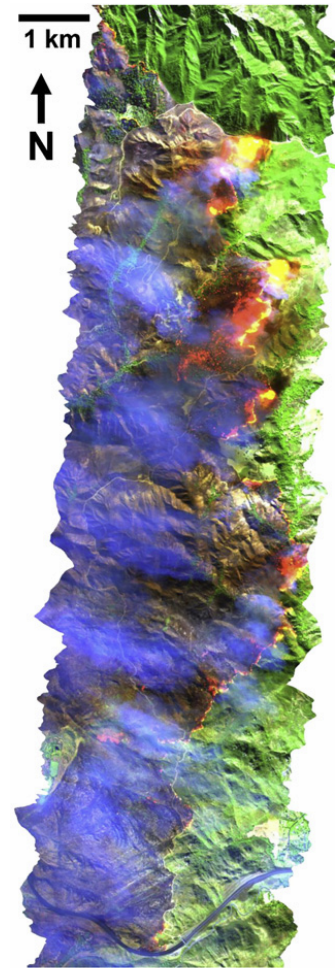
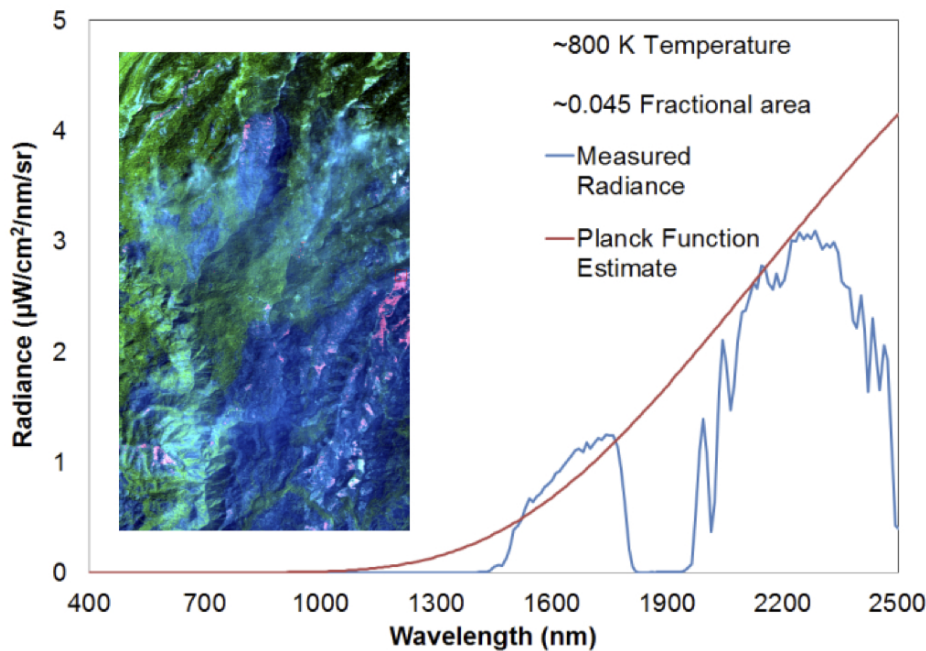


Opportunities for active fire research

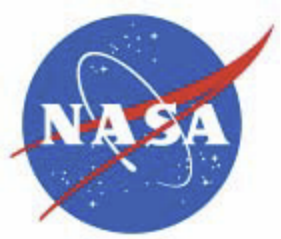


VSWIR

Retrieval of fire temperature and fractional area



(Dennison et al. 2006)



Opportunities for active fire research

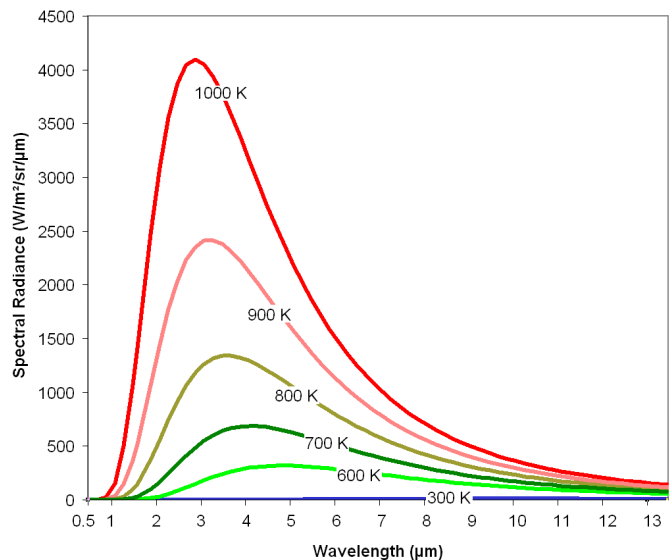


MTIR

Retrieval of fire radiative power (FRP), directly related to instantaneous emissions:

$$FRP = \frac{A_{\text{sampl}} \cdot \sigma \cdot \epsilon}{a \cdot \epsilon_{\text{MIR}}} (L_{\text{MIR}, \text{fire}} - L_{\text{MIR}, \text{bg}})$$

Needs mid (4 μm) and thermal (7.5-12 μm) to capture Planck curve and maximize detection

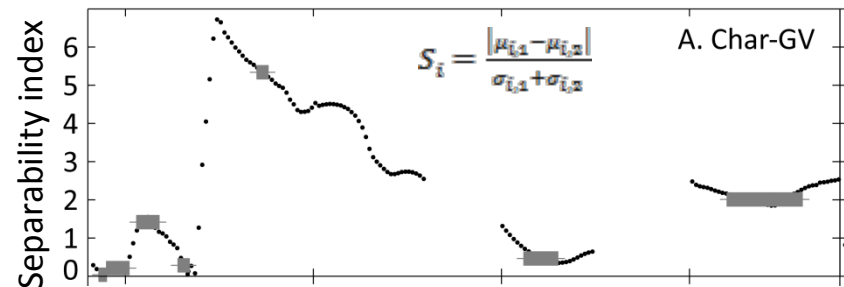
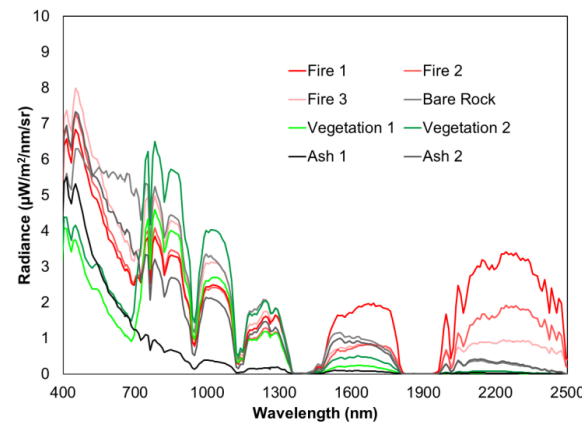
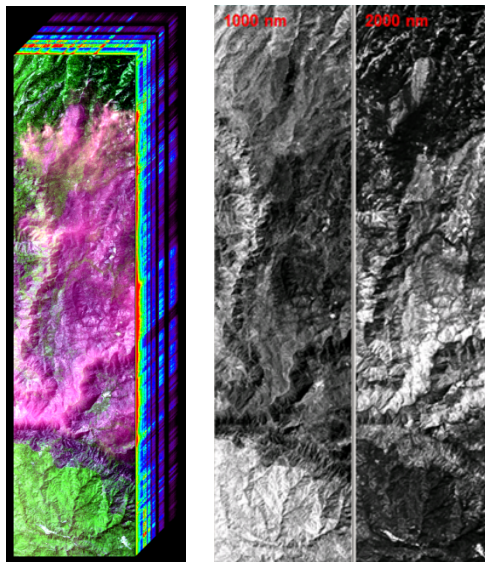


Opportunities for post-fire research

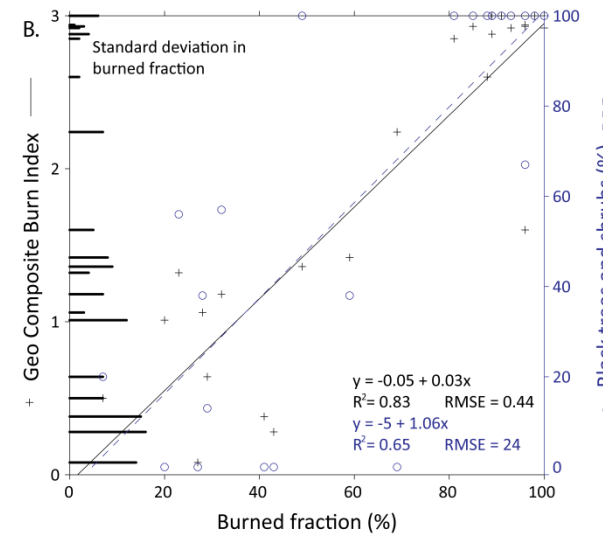
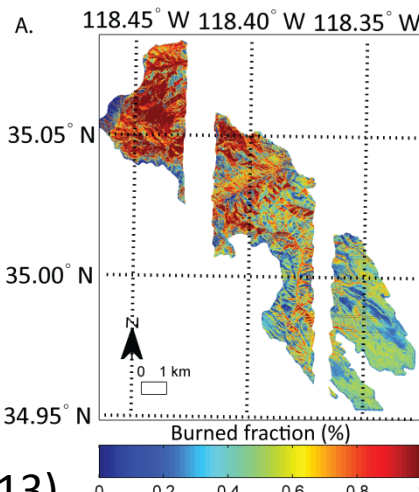


Narrowband spectral indices

Characterization of post-fire fractional cover and relation with fire severity



(Veraverbeke and Hook 2013)



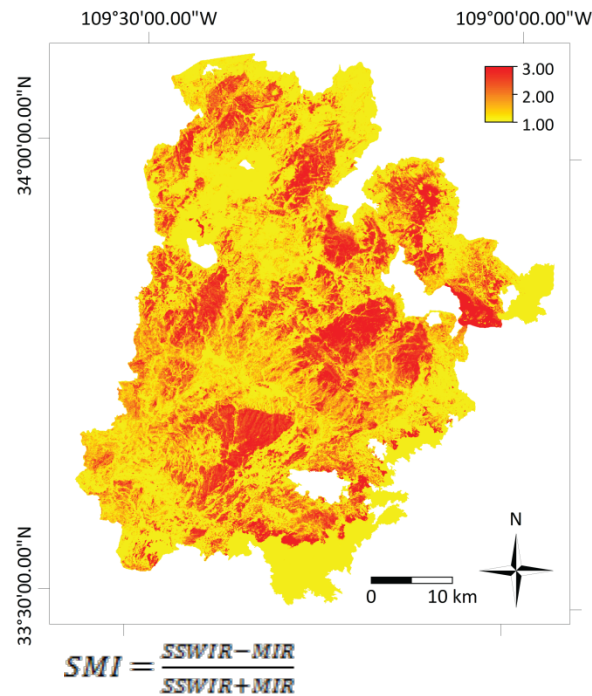


Opportunities for post-fire research

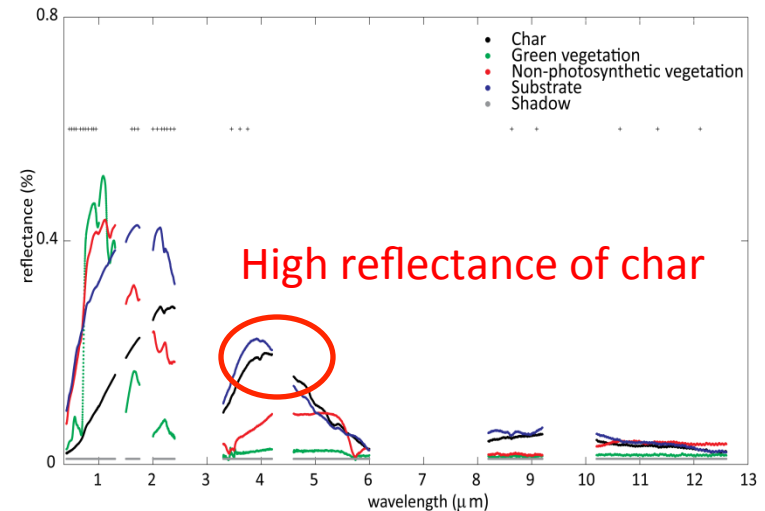


High reflectance of charcoal in MIR is extremely useful for burned area and fire severity mapping
Post-fire changes in land surface temperature

A. GeoCBI estimated from MASTER SMI



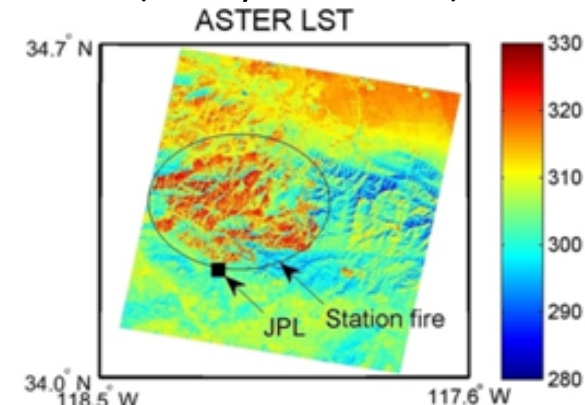
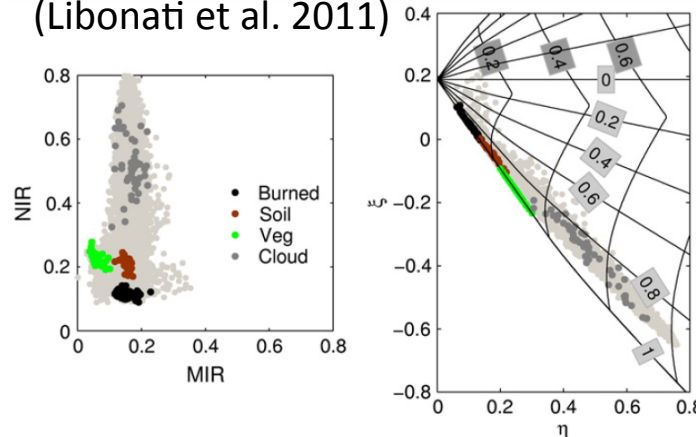
(Veraverbeke et al. 2011)

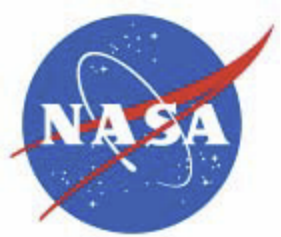


(Veraverbeke et al. 2012)

(Hulley et al. 2013)

(Libonati et al. 2011)



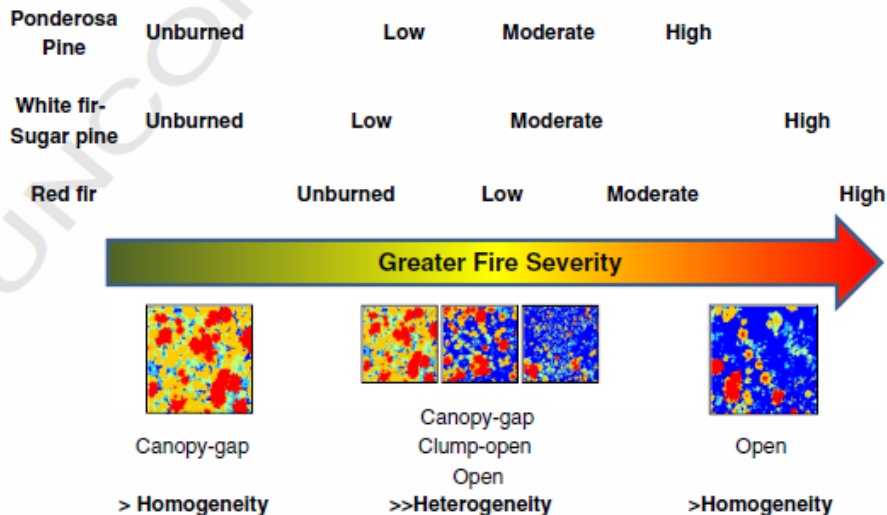
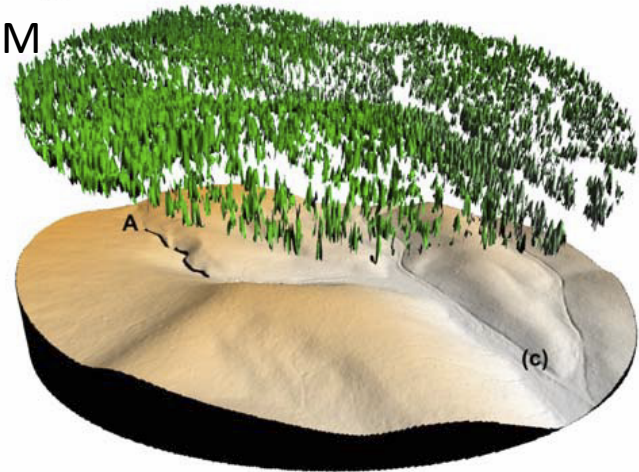
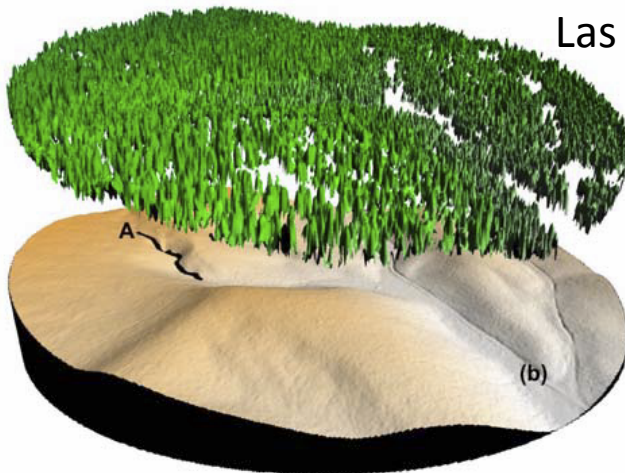
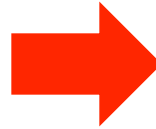


Opportunities for post-fire research

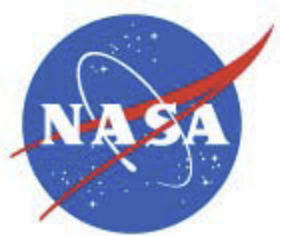
LIDAR

Changes in vegetation structure (horizontal and vertical) and relation to fire severity

Las Conchas fire, NM
(NCALM)



(Kane et al. 2013)



Conclusions



The large Rim fire provides **unprecedented** opportunities for fire research:

- Partial and overlapping **pre-fire** coverage with **AVIRIS**, **MASTER** and **LIDAR**
- Full **post-fire** coverage with **AVIRIS**, **MASTER** and **LIDAR**

HyspIRI would routinely acquire VSWIR spectroscopy and multispectral MTIR pre- and post-fire

Each type of data has its own opportunities for active fire and post-fire research

Potential synergies between multispectral TIR, hyperspectral VSWIR and LIDAR may open new perspectives in fire research, for example with regards to biomass consumption and emission estimates