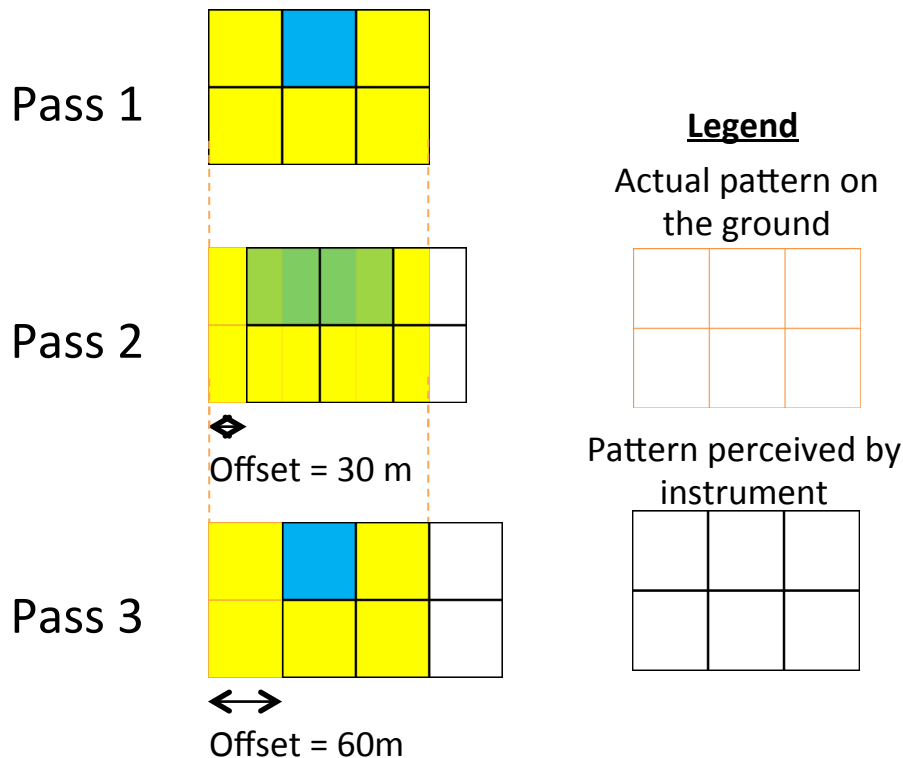
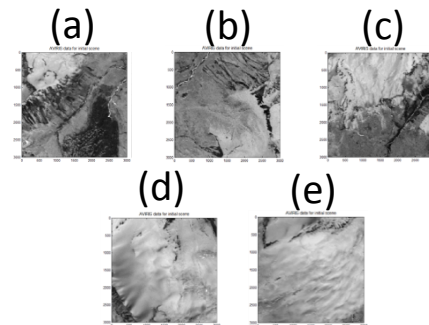


Measurement Uncertainty Due to Pointing Knowledge and Control

- Multiple passes over the same target will be offset from one another
- We characterized the uncertainty due to this offset using AVIRIS data resampled to HypsIRI resolution
- This phenomenon occurs with all satellite data (MODIS and Landsat included)
- Below shows six pixels viewing the same target over three sequential passes



For various (3km x 3km) scenes
(50 x 50 HypsIRI px)



Uncertainty floor on measurement due to imperfect control is scene dependant

